

a33

asbestos essentials

Non-licensed tasks

This information will help employers and the self-employed to comply with the Control of Asbestos Regulations 2006.

It is also useful for trade union and employee safety representatives.

Asbestos fibres can cause lung cancer and lung diseases.

The sheet covers the points you need to follow to reduce exposure to an adequate level.

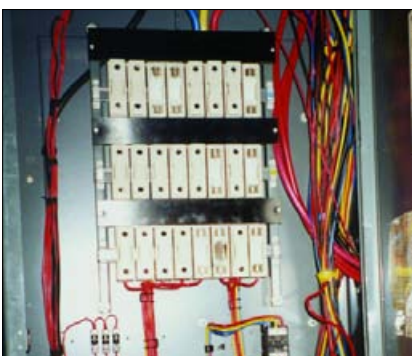
It can act as a risk assessment for asbestos if it matches what you plan to do.

Follow all the points, or use equally effective measures.

Only carry out this work if you are properly trained and have the right equipment.

Main points

- Asbestos fibres can kill.
- Keep exposures low using all the controls in this sheet.
- Also follow sheet a0 and equipment and method (em) sheets; see 'Essential information'.



Replacing an asbestos-containing fuse box or a single fuse assembly

What this sheet covers

This sheet describes good practice when you need to remove a single asbestos-containing fuse assembly or an asbestos-containing fuse box.

Preparing the work area

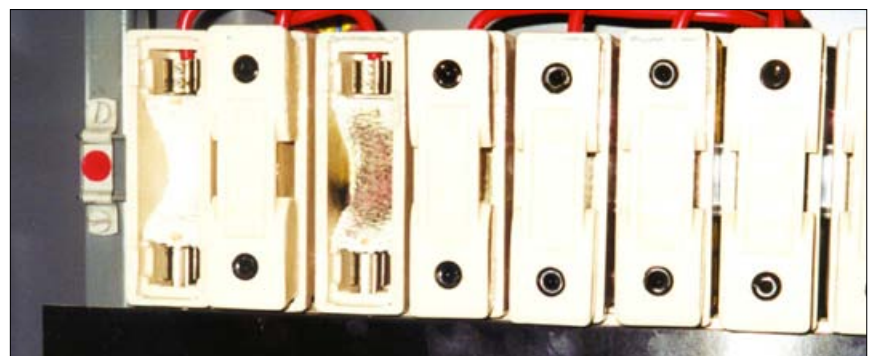
- Have a competent electrician isolate and lock off the electricity supply, and test to show that the system is not live.
- Restrict access - minimise the number of people present.
- Close doors. Use tape and notices to warn others.
- Ensure adequate lighting.

Equipment

- 500-gauge polythene sheeting and duct tape;
- warning tape and notices;
- Class H vacuum cleaner (BS EN 60335) - see sheet em4;
- screwdriver;
- non-asbestos replacement fuse box
- bucket of water and rags;
- asbestos waste container, eg labelled polythene sack; and
- clear polythene sack.

Personal protective equipment (PPE) - see sheet em6

- Provide:
 - disposable overalls fitted with a hood;
 - boots without laces (laced boots are hard to decontaminate); and
 - respiratory protective equipment.



Old style fuse-boxes contain asbestos inside the fuse assemblies and must be handled correctly

SAFETY CHECKLIST

- ✓ Can you avoid disturbing asbestos by doing the job in some other way?
- ✓ Do you need a licence for the work?
- ✓ Always follow all legal requirements.
- ✓ Follow the task guidance sheet.
- ✓ Use an asbestos waste container.
- ✓ Dispose at a licensed disposal site.

Caution:

- Don't sweep up dust or debris - use a Class H vacuum cleaner or damp rags.
- Don't take used overalls home.
- Don't re-use disposable PPE.
- Don't smoke.
- Don't eat or drink in the work area.

OTHER HAZARDS

Work at height - see www.hse.gov.uk/falls/index.htm. Take precautions to avoid falls. Must you work from a ladder? Where necessary, erect an access platform.

Electrical hazards - see www.hse.gov.uk/electricity/index.htm. Get a competent electrician to isolate and reconnect electricity supply.

There may also be other hazards - you need to consider them all.

Procedure

- Instead of a single fuse assembly, can you replace the whole fuse box?
- Protect nearby surfaces from contamination. Cover with 500-gauge polythene sheeting and fix with duct tape to non-asbestos surfaces.
- Check if the fuse box is attached to asbestos insulating board (AIB).
- Vacuum clean around and inside the fuse box.

Removal - fuse box

- Remove connections and carefully unscrew using 'shadow vacuuming' - see sheet em4.
- Place the screws in the waste container.
- Loosen and remove the fuse box. Put it in the waste container.
- Vacuum clean and wipe all surfaces.
- Install the new fuse box - attach it to a non-asbestos surface.
- If the fuse box had been attached to AIB, see sheet a6 to repair minor damage.

Removal - fuse assembly

- Unplug the fuse carrier and put it in the asbestos waste container.
- Vacuum the fuse holder with the Class H vacuum cleaner. Unscrew the connections.
- Unscrew the fuse holder with 'shadow vacuuming' - see sheet em4.
- Put screws and the fuse holder in the waste container.
- Vacuum and wipe clean the connectors.
- Install the non-asbestos replacement assembly.

Cleaning and disposal

- Clean the area and equipment with the Class H vacuum cleaner and damp rags.
- Put used rags, polythene sheeting and other waste in the asbestos waste container and tape it closed.
- Put the asbestos waste container in a clear polythene sack and tape it closed.
- Disposal - see sheet em9.

Personal decontamination

- See sheet em8

MORE HELP

- **Licensed asbestos contractors, and training providers** - HSE's Infoline
Tel: 0845 345 0055
Textphone: 0845 408 9577
e-mail: hse.infoline@natbrit.com
and at www.hse.gov.uk/asbestos/licensing/index.htm
- **HSE priced and free publications** -
HSE Books Tel: 01787 881165
and at www.hsebooks.co.uk
- **Qualified hygienists** - The
British Occupational Hygiene
Society (BOHS) Tel: 01332 298101
and at www.bohs.org/ under
'Professional > Consultants'
- **Trade associations** - the Asbestos
Removal Contractors Association
(ARCA) Tel: 01283 531126 Website:
www.arcaweb.org.uk, or the Asbestos
Control and Abatement Division (ACAD)
Tel: 01325 466704
- **Disposal of asbestos waste** -
www.environment-agency.co.uk,
www.sepa.org.uk/, or
www.netregs.gov.uk/netregs.
- **More asbestos pictures** -
www.hse.gov.uk/asbestos/gallery.htm
- **Help to decide if work is licensed** -
[www.hse.gov.uk/asbestos/licensing/
index.htm](http://www.hse.gov.uk/asbestos/licensing/index.htm)

Clearance and checking off

- Visually inspect the area to make sure that it has been cleaned properly.
- Clearance air sampling is not normally required.
- Get the premises owner, duty-holder or client to check off the job.

ESSENTIAL INFORMATION

Download and follow these advice sheets from www.hse.gov.uk/asbestos/essentials/index.htm:

- em1 *What to do if you uncover or damage materials that could contain asbestos*
- em2 *Training*
- em4 *Using a Class H vacuum cleaner for asbestos*
- em6 *Personal protective equipment (PPE)*
- em7 *Using damp rags to clean surfaces of minor asbestos contamination*
- em8 *Personal decontamination*
- em9 *Disposal of asbestos waste*

This document is available at www.hse.gov.uk/asbestos/essentials/index.htm

© Crown copyright This publication may be freely reproduced, except for advertising, endorsement or commercial purposes. First published as part of *Asbestos Essentials Task Manual* 2001. Please acknowledge the source as HSE.

Published by the Health and Safety Executive 12/07

This guidance is issued by the Health and Safety Executive. Following the guidance is not compulsory and you are free to take other action. But if you do follow the guidance you will normally be doing enough to comply with the law. Health and safety inspectors seek to secure compliance with the law and may refer to this guidance as illustrating good practice.